

# Alcohol

Contents:

			Page
Figure	10.1	Number of Collisions and Victims Involving Alcohol by Year	67
	10.2	Per cent of Collisions and Victims Involving Alcohol by Year	68
	10.3	Alcohol-Involved Collisions by Month and Year	69
	10.4	Injuries Due to Alcohol-Involved Collisions by Month and Year	70
	10.5	Deaths Due to Alcohol-Involved Collisions by Month and Year	71
	10.6	Collisions Involving Drinking Drivers by Day of Week	72
	10.7	Collisions Involving Drinking Drivers by Time of Day	72
	10.8	2006 Drinking Drivers by Driver Age	74
	10.9	2006 Injury Classification by Alcohol Involvement	74
Table	10.1	Number of Collisions and Victims Involving Alcohol by Year	67
	10.2	Per cent of Collisions and Victims Involving Alcohol by Year	68
	10.3	Alcohol-Involved Collisions by Month and Year	69
	10.4	Injuries Due to Alcohol-Involved Collisions by Month and Year	70
	10.5	Deaths Due to Alcohol-Involved Collisions by Month and Year	71
	10.6	Collisions Involving a Drinking Driver	73
	10.7	Collisions Involving Pedestrians or Cyclists That Had Been Drinking	73
	10.8	Injury Classification of Vehicle Occupants by Alcohol Involvement	74
	10.9	2006 Drinking Drivers by Gender and Severity of Collision	75
	10.10	Drinking Drivers In Collisions by Gender by Year	76
	10.11	Drinking Drivers In Collisions by Collision Severity by Year	76

## Alcohol

Drinking and driving remains the number one contributing factor in fatal collisions in Saskatchewan. SGI is continuously working on solutions to help resolve this important traffic safety issue. There are serious consequences for drinking and driving.

Driver's licence suspension periods apply if you are convicted of driving with a blood alcohol level over .08, impaired driving or failure to provide a breath sample. In Saskatchewan, the first conviction of any of the above offences will result in a driver's licence suspension for a period of one year. A second offence results in a three-year licence suspension and any subsequent offence results in a five-year licence suspension. Fines for these offences start at \$600, with no maximum.

If you are at fault for a collision while driving impaired, you also have no insurance coverage for the damage to your vehicle or to others' vehicles or property.

Before a driver's licence can be reinstated, the driver must attend a mandatory addiction screening and assessment, and complete any education or recovery program recommended by their addictions counsellor.

First-time drinking and driving offenders who have successfully completed their required addiction screening and all education or recovery programs may be eligible to participate in the Ignition Interlock Program.

### Administrative Sanctions

New drivers who consume any amount of alcohol and drive receive a 30-day suspension and must attend a Driving Without Impairment (DWI) course for the first occurrence. Subsequent occurrences result in a 90-day suspension and mandatory addictions screening and an education or recovery program recommended by a drug and alcohol counsellor before the driver's licence will be reinstated.

Experienced drivers with a blood alcohol level over .04 receive a 24-hour driver's licence suspension. A second 24-hour suspension is extended to a 15 day driver's licence suspension. The driver is also required to attend a DWI course if a second 24-hour suspension is incurred. Subsequent occurrences result in a 90-day suspension, addictions screening and a recommended education or recovery program.

All drivers who are charged with a blood alcohol level exceeding .08 or refusing a breath test will be subject to a 90-day suspension. The individual receives an immediate 24-hour suspension and seven-day driving permit if the driver had a valid driver's licence. The 90-day administrative suspension begins after the expiry of the seven-day driving permit.

Police now have a new tool for detecting impairment. The Standardized Field Sobriety Test (SFST) is a series of tests that detect if a driver is impaired by alcohol and/or drugs. Failing or refusing to take the SFST results in an immediate 24-hour driver's licence suspension.

## Number of Collisions and Victims Involving Alcohol by Year

Table 10.1

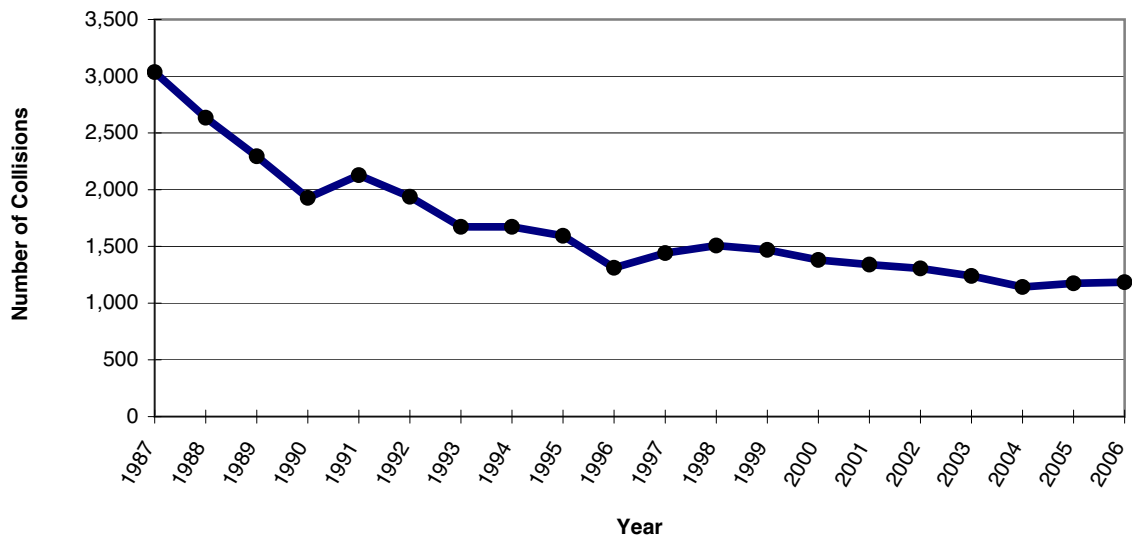
Year	Number of Collisions				Number of Victims		
	Property Damage Only	Personal Injury	Fatal	Total	Injured	Killed	Total
1987	1,957	985	94	3,036	1,733	123	1,856
1988	1,694	877	63	2,634	1,511	81	1,592
1989	1,498	729	68	2,295	1,255	76	1,331
1990	1,263	606	58	1,927	1,036	65	1,101
1991	1,344	707	77	2,128	1,215	88	1,303
1992	1,197	685	55	1,937	1,265	64	1,329
1993	961	653	59	1,673	1,126	70	1,196
1994	966	654	52	1,672	1,142	57	1,199
1995	980	558	56	1,594	991	61	1,052
1996	766	507	38	1,311	901	47	948
1997	829	565	47	1,441	1,062	58	1,120
1998	891	566	51	1,508	1,013	59	1,072
1999	850	555	64	1,469	993	86	1,079
2000	788	553	39	1,380	951	47	998
2001	805	466	68	1,339	835	79	914
2002	748	510	48	1,306	821	51	872
2003	704	477	58	1,239	807	63	870
2004	633	465	44	1,142	799	53	852
2005	723	410	42	1,175	670	46	716
2006	724	415	45	1,184	746	46	792

Minimum reporting limits for property damage only collisions were \$200 prior to 1984, \$500 as of Jan. 1, 1984 and \$1,000 as of Jan. 1, 1993.

Alcohol involvement in fatal traffic collisions is confirmed through the reporting police agency and Coroner's Office after all investigation and lab testing has been completed. This procedure is not done for injury and property damage only collisions.

## Alcohol Involved Collisions by Year

Figure 10.1



# Alcohol – SECTION 10

Per cent of Collisions and Victims Involving Alcohol by Year

Table 10.2

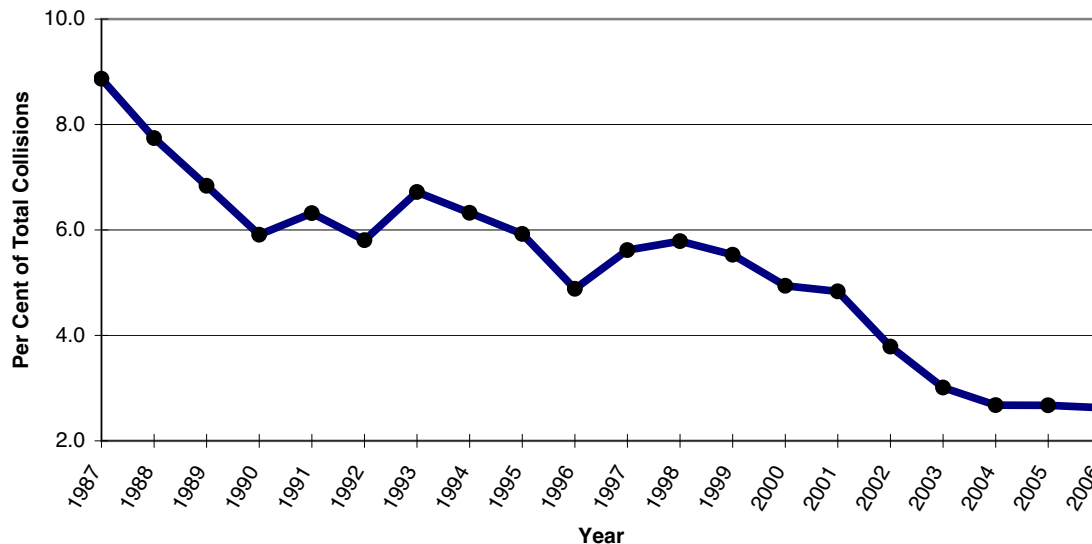
Year	Per cent of Collisions				Per cent of Victims		
	Property Damage Only	Personal Injury	Fatal	Total	Injured	Killed	Total
1987	7.0	16.0	48.7	8.9	19.0	52.1	19.8
1988	6.1	14.7	39.4	7.7	17.3	40.5	17.8
1989	5.4	13.2	42.0	6.8	15.4	39.6	16.0
1990	4.6	11.4	42.3	5.9	13.5	42.2	14.1
1991	4.7	13.5	51.0	6.3	15.9	51.5	16.6
1992	4.3	12.8	43.3	5.8	15.7	44.8	16.2
1993	5.0	11.9	44.0	6.7	14.0	45.8	14.6
1994	4.7	11.6	38.8	6.3	13.9	37.7	14.4
1995	4.5	11.1	41.5	5.9	13.3	38.9	13.8
1996	3.5	10.7	35.8	4.9	13.2	34.8	13.6
1997	4.1	11.0	36.2	5.6	13.9	35.4	14.4
1998	4.3	11.4	40.2	5.8	14.0	40.1	14.5
1999	4.1	10.1	42.7	5.5	12.4	45.5	13.1
2000	3.5	10.2	28.5	4.9	12.1	31.1	12.5
2001	3.6	9.5	48.6	4.8	12.0	47.3	12.8
2002	2.6	10.0	39.0	3.8	11.2	37.2	11.7
2003	2.0	8.7	42.6	3.0	10.5	42.6	11.1
2004	1.7	8.6	41.9	2.7	10.6	42.1	11.1
2005	1.9	7.9	32.6	2.7	9.4	31.3	9.9
2006	1.8	8.1	36.3	2.6	10.5	33.8	10.9

Minimum reporting limits for property damage only collisions were \$200 prior to 1984, \$500 as of Jan. 1, 1984 and \$1,000 as of Jan. 1, 1993.

Alcohol involvement in fatal traffic collisions is confirmed with the reporting police agency and Coroner's Office after all investigation and lab testing has been completed. This procedure is not done for injury and property damage only collisions.

Per cent of Alcohol Involved Collisions by Year

Figure 10.2



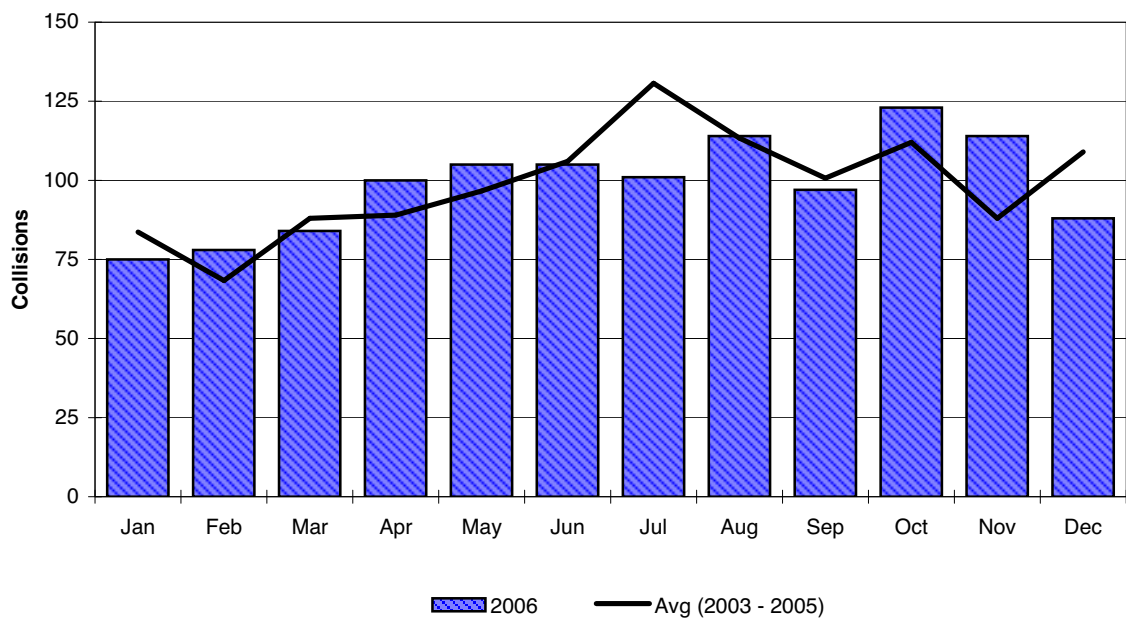
## Alcohol-Involved Collisions by Month and Year

Table 10.3

Month	2001	2002	2003	2004	2005	Average	2006	%
						2003-2005		
January	76	112	76	90	85	83.7	75	-10.4
February	80	105	81	61	63	68.3	78	14.1
March	108	94	89	89	86	88.0	84	-4.5
April	112	87	94	94	79	89.0	100	12.4
May	116	116	101	100	89	96.7	105	8.6
June	120	139	118	104	96	106.0	105	-0.9
July	130	104	122	126	144	130.7	101	-22.7
August	118	124	121	92	127	113.3	114	0.6
September	119	113	112	100	90	100.7	97	-3.6
October	122	108	116	107	113	112.0	123	9.8
November	116	107	91	92	81	88.0	114	29.5
December	121	97	118	87	122	109.0	88	-19.3
<b>Totals</b>	<b>1,338</b>	<b>1,306</b>	<b>1,239</b>	<b>1,142</b>	<b>1,175</b>	<b>1,185.3</b>	<b>1,184</b>	<b>-0.1</b>

## Alcohol-Involved Collisions by Month

Figure 10.3



# Alcohol – SECTION 10

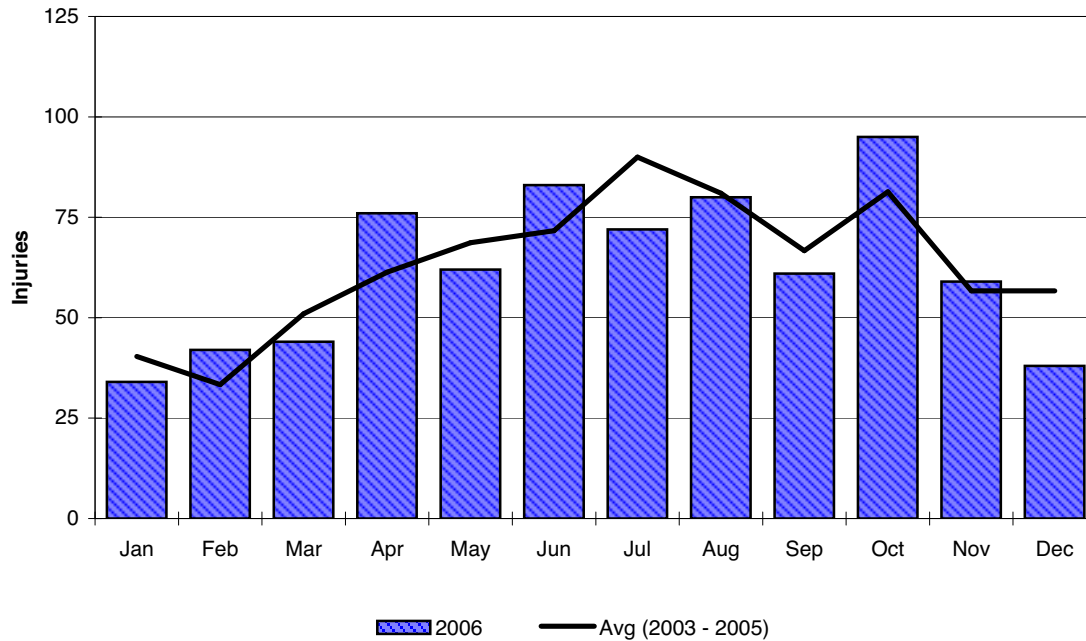
## Injuries Due to Alcohol-Involved Collisions by Month and Year

Table 10.4

Month	2001	2002	2003	2004	2005	Average	2006	%
						2003-2005		Change
January	32	64	31	37	53	40.3	34	-15.7
February	53	47	40	38	22	33.3	42	26.0
March	45	67	51	52	50	51.0	44	-13.7
April	53	49	53	89	42	61.3	76	23.9
May	72	91	78	78	50	68.7	62	-9.7
June	72	101	99	78	38	71.7	83	15.8
July	108	79	77	92	101	90.0	72	-20.0
August	80	84	91	75	77	81.0	80	-1.2
September	83	71	87	65	48	66.7	61	-8.5
October	90	57	97	78	69	81.3	95	16.8
November	78	58	45	75	50	56.7	59	4.1
December	68	53	58	42	70	56.7	38	-32.9
<b>Totals</b>	<b>834</b>	<b>821</b>	<b>807</b>	<b>799</b>	<b>670</b>	<b>758.7</b>	<b>746</b>	<b>-1.7</b>

## Injuries Due to Alcohol-Involved Collisions by Month

Figure 10.4



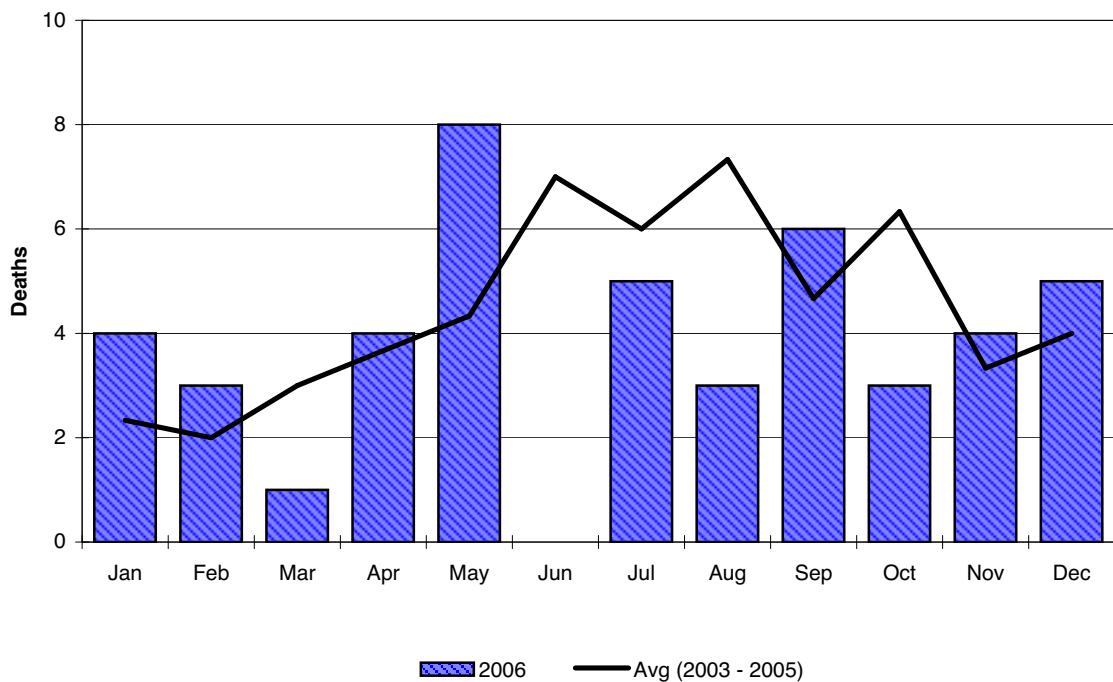
## Deaths Due to Alcohol-Involved Collisions by Month and Year

Table 10.5

Month	2001	2002	2003	2004	2005	Average	2006	%
						2003-2005		Change
January	3	7	4	2	1	2.3	4	71.4
February	1	2	4	2	0	2.0	3	50.0
March	4	0	2	5	2	3.0	1	-66.7
April	7	5	2	6	3	3.7	4	9.1
May	5	4	3	2	8	4.3	8	84.6
June	9	5	12	3	6	7.0	0	-100.0
July	8	8	5	7	6	6.0	5	-16.7
August	14	1	10	7	5	7.3	3	-59.1
September	7	4	4	7	3	4.7	6	28.6
October	6	8	10	7	2	6.3	3	-52.6
November	11	4	3	4	3	3.3	4	20.0
December	4	3	4	1	7	4.0	5	25.0
<b>Totals</b>	<b>79</b>	<b>51</b>	<b>63</b>	<b>53</b>	<b>46</b>	<b>54.0</b>	<b>46</b>	<b>-14.8</b>

## Deaths Due to Alcohol-Involved Collisions by Month

Figure 10.5

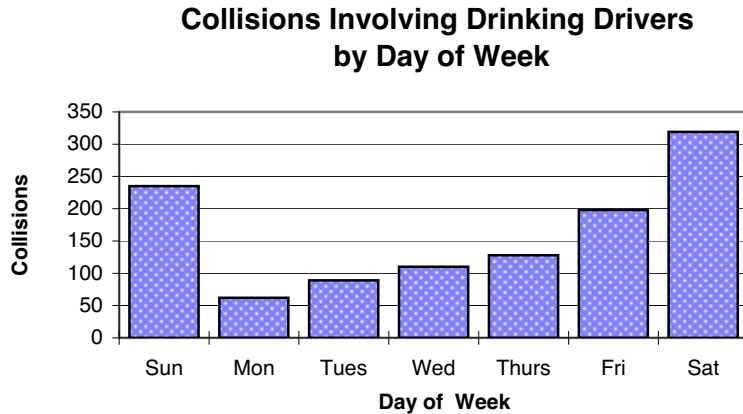


# Alcohol – SECTION 10

**Collisions Involving Drinking Drivers by Day of Week**

Figure 10.6

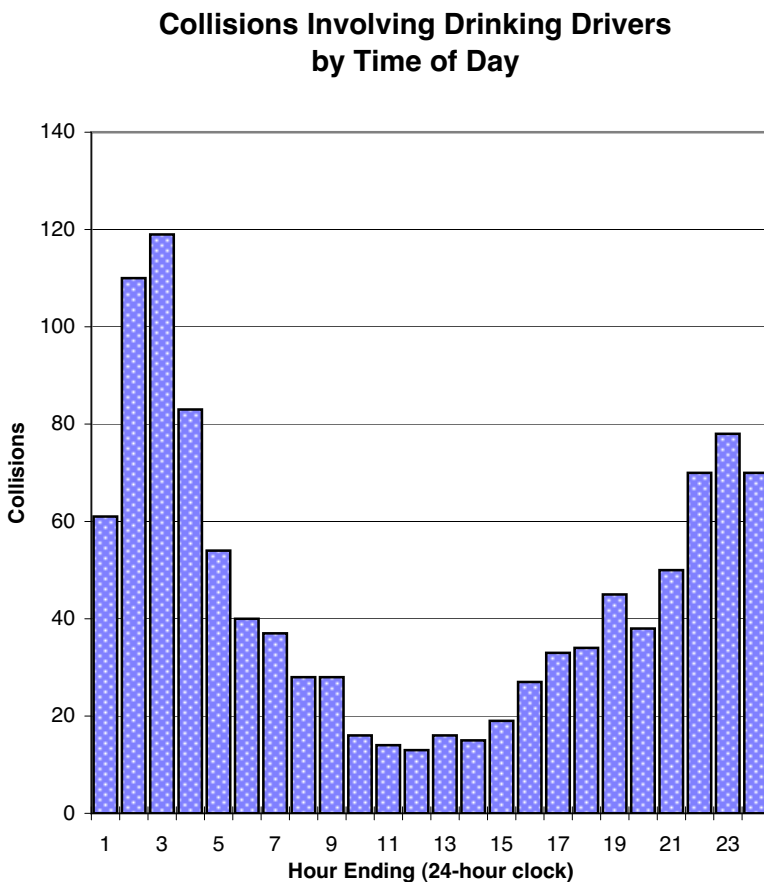
Day of the Week	Collisions
Sunday	235
Monday	62
Tuesday	89
Wednesday	110
Thursday	128
Friday	198
Saturday	319
<b>TOTAL</b>	<b>1141</b>



**Collisions Involving Drinking Drivers by Time of Day**

Figure 10.7

Time of Day	Collisions
Midnight to 0:59 a.m.	61
1 a.m. to 1:59 a.m.	110
2 a.m. to 2:59 a.m.	119
3 a.m. to 3:59 a.m.	83
4 a.m. to 4:59 a.m.	54
5 a.m. to 5:59 a.m.	40
6 a.m. to 6:59 a.m.	37
7 a.m. to 7:59 a.m.	28
8 a.m. to 8:59 a.m.	28
9 a.m. to 9:59 a.m.	16
10 a.m. to 10:59 a.m.	14
11 a.m. to 11:59 a.m.	13
Noon to 0:59 p.m.	16
1 p.m. to 1:59 p.m.	15
2 p.m. to 2:59 p.m.	19
3 p.m. to 3:59 p.m.	27
4 p.m. to 4:59 p.m.	33
5 p.m. to 5:59 p.m.	34
6 p.m. to 6:59 p.m.	45
7 p.m. to 7:59 p.m.	38
8 p.m. to 8:59 p.m.	50
9 p.m. to 9:59 p.m.	70
10 p.m. to 10:59 p.m.	78
11 p.m. to 11:59 p.m.	70
Time not stated	43
<b>TOTAL</b>	<b>1141</b>



## Collisions Involving a Drinking Driver

Table 10.6

Year	Number of Collisions				Number of Victims		
	Property Damage	Personal Injury	Fatal	Total	Injured	Killed	Total
1987	1,957	985	94	3,036	1,733	123	1,856
1988	1,682	867	62	2,611	1,497	80	1,577
1989	1,492	722	68	2,282	1,243	76	1,319
1990	1,255	603	57	1,915	1,032	64	1,096
1991	1,340	684	71	2,095	1,191	82	1,273
1992	1,195	662	52	1,909	1,242	61	1,303
1993	954	631	52	1,637	1,103	63	1,166
1994	965	634	46	1,645	1,121	51	1,172
1995	974	541	53	1,568	971	58	1,029
1996	764	493	34	1,291	886	43	929
1997	827	553	44	1,424	1,050	55	1,105
1998	889	555	46	1,490	1,000	54	1,054
1999	847	530	61	1,438	968	83	1,051
2000	788	531	36	1,355	928	44	972
2001	804	449	63	1,316	817	74	891
2002	746	490	43	1,279	800	46	846
2003	702	451	53	1,206	776	58	834
2004	628	444	40	1,112	777	49	826
2005	721	389	35	1,145	649	39	688
2006	716	383	42	1,141	714	43	757

## Collisions Involving Pedestrians or Cyclists That Had Been Drinking

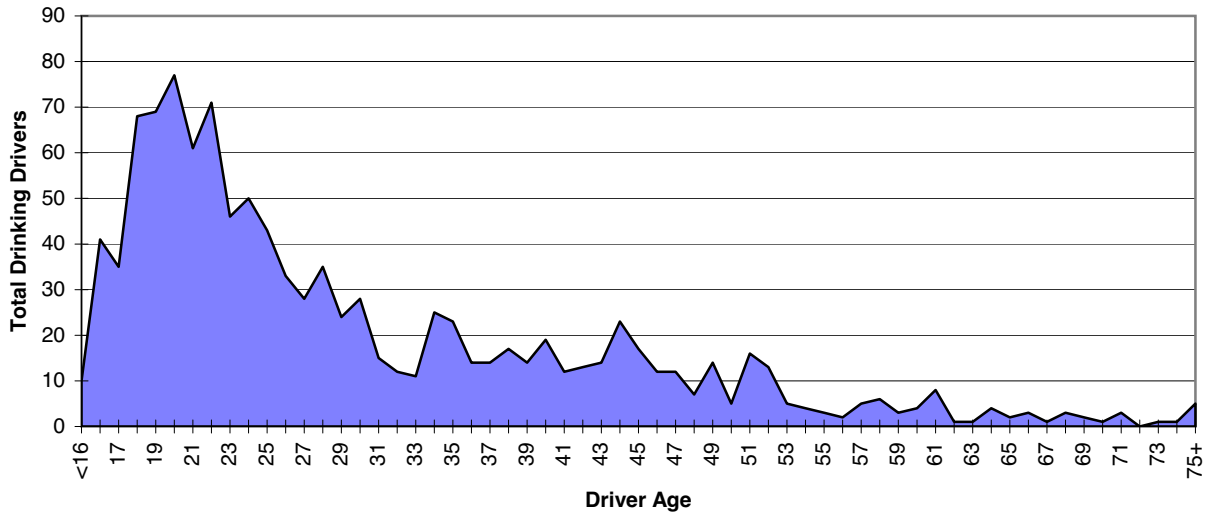
Table 10.7

Year	Number of Collisions				Number of Victims		
	Property Damage	Personal Injury	Fatal	Total	Injured	Killed	Total
1987	0	0	0	0	0	0	0
1988	0	9	0	9	9	0	9
1989	1	5	0	6	5	0	5
1990	0	2	1	3	3	1	4
1991	0	26	13	39	30	13	43
1992	0	26	3	29	26	3	29
1993	1	26	8	35	28	8	36
1994	0	22	10	32	23	10	33
1995	2	18	3	23	20	3	23
1996	1	14	4	19	14	4	18
1997	2	16	5	23	17	5	22
1998	2	14	8	24	17	8	25
1999	3	26	5	34	27	5	32
2000	0	22	5	27	23	5	28
2001	1	18	7	26	22	7	29
2002	2	22	5	29	23	5	28
2003	2	29	6	37	34	6	40
2004	5	23	6	34	24	6	30
2005	2	23	8	33	23	8	31
2006	6	36	3	45	36	3	39

Pedestrian contributing factors were not recorded prior to 1991 and cyclist statistics are not available prior to 1988.

### 2006 Drinking Drivers by Driver Age

Figure 10.8



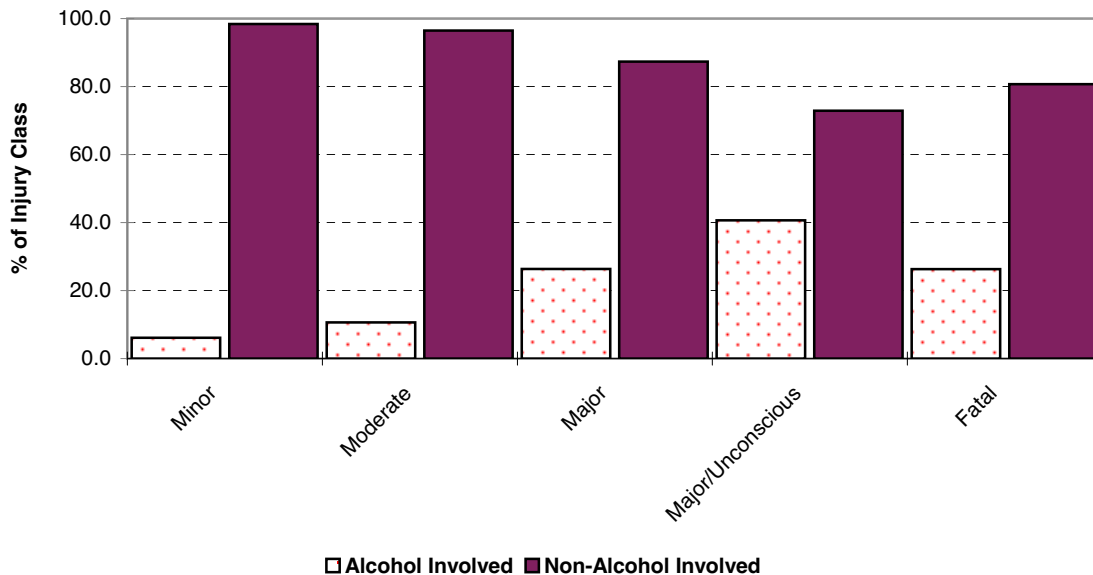
### 2006 Injury Classification of Vehicle Occupants by Alcohol Involvement

Table 10.8

Injury Classification	Occupants of a Drinking Driver		All Vehicle Occupants	% with Alcohol
	Yes	No		
Minor	267	4,305	4,375	6.1
Moderate	167	1,512	1,567	10.7
Major	79	262	300	26.3
Major/Unconscious	24	43	59	40.7
Fatal	30	92	114	26.3
<b>Total</b>	<b>567</b>	<b>6,214</b>	<b>6,781</b>	<b>8.4</b>

### Injury Class by Alcohol Involvement

Figure 10.9



# Alcohol – SECTION 10

2006 Drinking Drivers by Gender and Severity of Collision

Table 10.9

Driver Gender					Collision Severity				Driver Gender					Collision Severity					
Age	Male	Female	Not Stated		Total	PD* Only	Personal		Total	Age	Male	Female	Not Stated		Total	PD* Only	Personal		Total
			Male	Female			Injury	Fatal					Male	Female			Injury	Fatal	
<16	6	4	0	10	6	4	0	10	59	3	0	0	3	3	0	0	3		
16	26	15	0	41	26	15	0	41	60	3	1	0	4	3	1	0	4		
17	24	10	1	35	24	10	1	35	61	4	3	1	8	4	3	1	8		
18	40	25	3	68	40	25	3	68	62	0	1	0	1	0	1	0	1		
19	45	22	2	69	45	22	2	69	63	0	1	0	1	0	1	0	1		
20	40	34	3	77	40	34	3	77	64	4	0	0	4	4	0	0	4		
21	43	15	3	61	43	15	3	61	65	1	1	0	2	1	1	0	2		
22	32	35	4	71	32	35	4	71	66	2	1	0	3	2	1	0	3		
23	31	12	3	46	31	12	3	46	67	1	0	0	1	1	0	0	1		
24	29	18	3	50	29	18	3	50	68	3	0	0	3	3	0	0	3		
25	27	16	0	43	27	16	0	43	69	1	1	0	2	1	1	0	2		
26	23	10	0	33	23	10	0	33	70	1	0	0	1	1	0	0	1		
27	21	7	0	28	21	7	0	28	71	2	1	0	3	2	1	0	3		
28	22	12	1	35	22	12	1	35	72	0	0	0	0	0	0	0	0		
29	17	7	0	24	17	7	0	24	73	1	0	0	1	1	0	0	1		
30	14	13	1	28	14	13	1	28	74	1	0	0	1	1	0	0	1		
31	13	2	0	15	13	2	0	15	75	0	0	0	0	0	0	0	0		
32	7	4	1	12	7	4	1	12	76	2	0	0	2	2	0	0	2		
33	7	3	1	11	7	3	1	11	77	3	0	0	3	3	0	0	3		
34	17	7	1	25	17	7	1	25	78	0	0	0	0	0	0	0	0		
35	12	8	3	23	12	8	3	23	79	0	0	0	0	0	0	0	0		
36	7	6	1	14	7	6	1	14	80	0	0	0	0	0	0	0	0		
37	10	3	1	14	10	3	1	14	81	0	0	0	0	0	0	0	0		
38	11	6	0	17	11	6	0	17	82	0	0	0	0	0	0	0	0		
39	4	9	1	14	4	9	1	14	83	0	0	0	0	0	0	0	0		
40	11	7	1	19	11	7	1	19	84	0	0	0	0	0	0	0	0		
41	8	3	1	12	8	3	1	12	85	0	0	0	0	0	0	0	0		
42	6	6	1	13	6	6	1	13	86	0	0	0	0	0	0	0	0		
43	9	4	1	14	9	4	1	14	87	0	0	0	0	0	0	0	0		
44	17	5	1	23	17	5	1	23	88	0	0	0	0	0	0	0	0		
45	10	7	0	17	10	7	0	17	89	0	0	0	0	0	0	0	0		
46	9	2	1	12	9	2	1	12	90	0	0	0	0	0	0	0	0		
47	10	2	0	12	10	2	0	12	91 +	0	0	0	0	0	0	0	0		
48	3	4	0	7	3	4	0	7	NS**	33	11	3	47	33	11	3	47		
49	6	7	1	14	6	7	1	14	Total	722	389	45	1,156	722	389	45	1,156		
50	3	2	0	5	3	2	0	5											
51	12	4	0	16	12	4	0	16											
52	8	5	0	13	8	5	0	13											
53	4	1	0	5	4	1	0	5											
54	3	1	0	4	3	1	0	4											
55	2	0	1	3	2	0	1	3											
56	2	0	0	2	2	0	0	2											
57	3	2	0	5	3	2	0	5											
58	3	3	0	6	3	3	0	6											

\*PD Only = Property Damage Only Collision

\*\* NS is where the driver age is not stated.

# Alcohol – SECTION 10

## Drinking Drivers in Collisions by Gender by Year

Table 10.10

Age	2004				2005				2006			
	Male	Female	Not Stated	Total	Male	Female	Not Stated	Total	Male	Female	Not Stated	Total
<16	9	1	0	10	1	5	0	6	6	4	0	10
16	22	14	0	36	21	10	0	31	26	15	0	41
17	31	8	0	39	29	7	0	36	24	10	1	35
18	49	13	0	62	56	17	0	73	40	25	3	68
19	57	18	0	75	62	19	0	81	45	22	2	69
20	56	15	0	71	58	11	0	69	40	34	3	77
21	49	9	0	58	62	17	0	79	43	15	3	61
22	46	6	0	52	36	11	0	47	32	35	4	71
23	37	9	0	46	41	6	0	47	31	12	3	46
24	35	4	0	39	36	9	1	46	29	18	3	50
25 - 34	168	58	0	226	194	63	1	258	168	81	5	254
35 - 44	160	40	0	200	134	45	0	179	95	57	11	163
45 - 54	80	17	0	97	76	19	1	96	68	35	2	105
55 - 64	31	7	0	38	35	5	0	40	24	11	2	37
65 - 74	14	1	0	15	16	1	0	17	13	4	0	17
75 >	12	1	0	13	6	1	0	7	5	0	0	5
NS *	6	1	37	44	6	0	39	45	33	11	3	47
<b>Total</b>	<b>862</b>	<b>222</b>	<b>37</b>	<b>1,121</b>	<b>869</b>	<b>246</b>	<b>42</b>	<b>1,157</b>	<b>722</b>	<b>389</b>	<b>45</b>	<b>1,156</b>

## Drinking Drivers in Collisions by Collision Severity by Year

Table 10.11

Age	2004				2005				2006			
	Property Damage	Personal Injury	Fatal	Total	Property Damage	Personal Injury	Fatal	Total	Property Damage	Personal Injury	Fatal	Total
<16	5	5	0	10	3	3	0	6	6	4	0	10
16	16	19	1	36	16	13	2	31	26	15	0	41
17	24	14	1	39	20	16	0	36	24	10	1	35
18	39	23	0	62	47	25	1	73	40	25	3	68
19	44	30	1	75	53	25	3	81	45	22	2	69
20	42	27	2	71	42	25	2	69	40	34	3	77
21	36	18	4	58	50	27	2	79	43	15	3	61
22	31	20	1	52	31	15	1	47	32	35	4	71
23	29	16	1	46	25	22	0	47	31	12	3	46
24	22	14	3	39	32	13	1	46	29	18	3	50
25 - 34	112	107	7	226	161	86	11	258	168	81	5	254
35 - 44	105	85	10	200	117	56	7	180	95	57	11	163
45 - 54	53	41	3	97	58	36	2	96	68	35	2	105
55 - 64	20	16	2	38	21	16	3	40	24	11	2	37
65 - 74	11	2	2	15	11	6	0	17	13	4	0	17
75 >	6	5	2	13	4	3	0	7	5	0	0	5
NS *	36	8	0	44	34	9	1	44	33	11	3	47
<b>Total</b>	<b>631</b>	<b>450</b>	<b>40</b>	<b>1,121</b>	<b>725</b>	<b>396</b>	<b>36</b>	<b>1,157</b>	<b>722</b>	<b>389</b>	<b>45</b>	<b>1,156</b>

\* NS is where the driver age is not stated.